

Setting up Xming and Putty on your Windows laptop

Xming is a program that runs an X-Windows server to run on Windows OS computers. It allows GUI programs from Linux/UNIX computers to display on your Windows laptop. On its own, Xming serves no purpose on a Windows PC. But, when Xming is used in conjunction with the Windows program Putty, Xming is very useful.

Putty is a terminal program for Windows that connects to a Linux/UNIX server to allow command line or CLI (Command Line Interface) work to be done on a Linux/UNIX server from Windows PCs.

So Putty is a terminal program that connects a terminal session to the Linux/UNIX server and Xming is the program that allows Linux/UNIX GUIs to display or pass through to your Windows based computer.

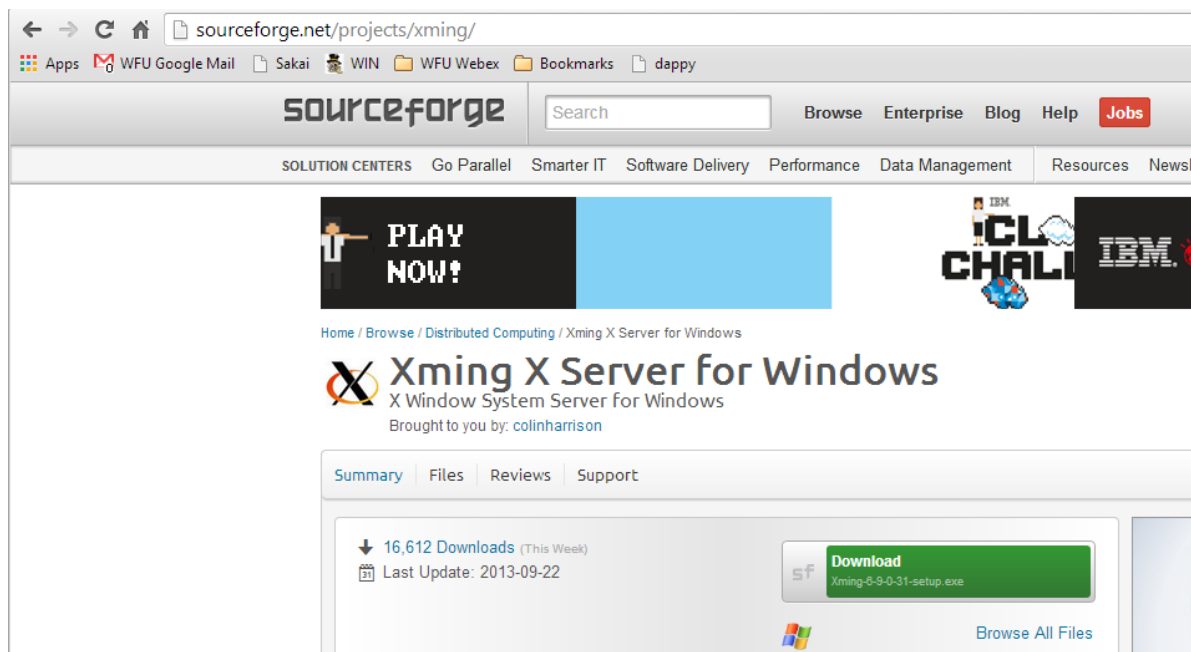
Note: Xming needs to be started BEFORE you connect with Putty.

Putty must be configured to allow for X11 forwarding to allow Linux/UNIX GUIs to pass

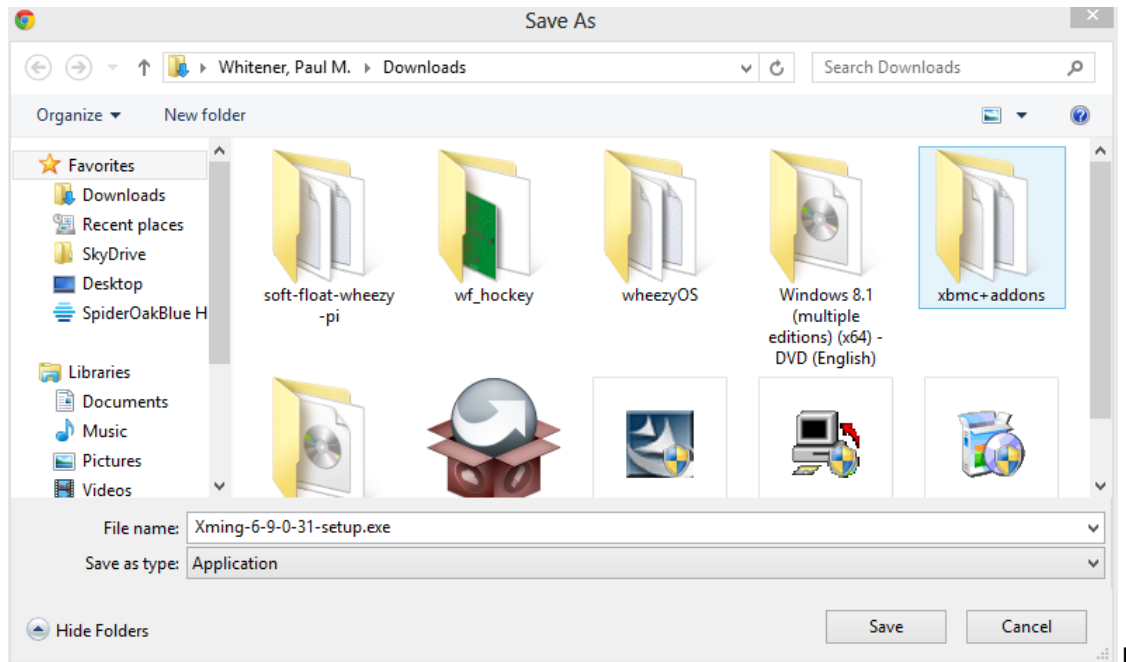
If you have a Mac or a Linux VM, you do not need Xming or Putty. You can simply connect through a terminal window using the command:

```
ssh -X username@servername
```

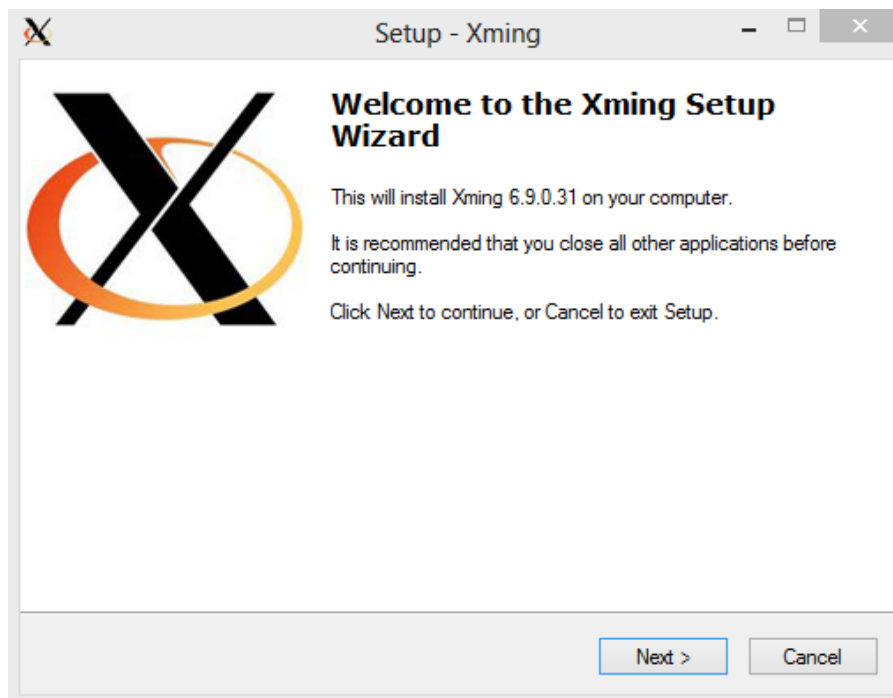
Navigate to the site: sourceforge.net/projects/xming and download xming by clicking on the green download button



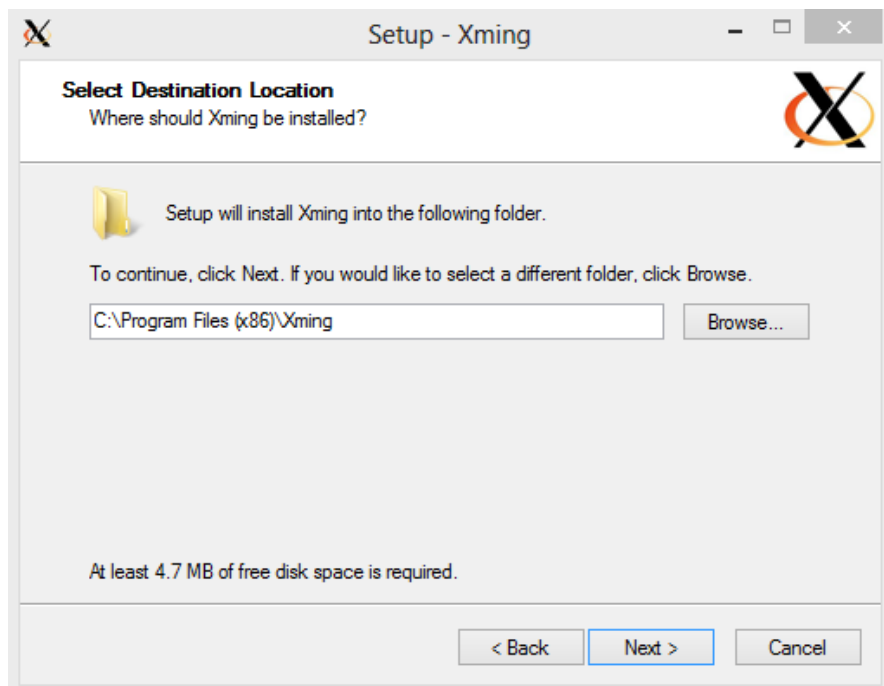
And save the file, then open/run the file to install



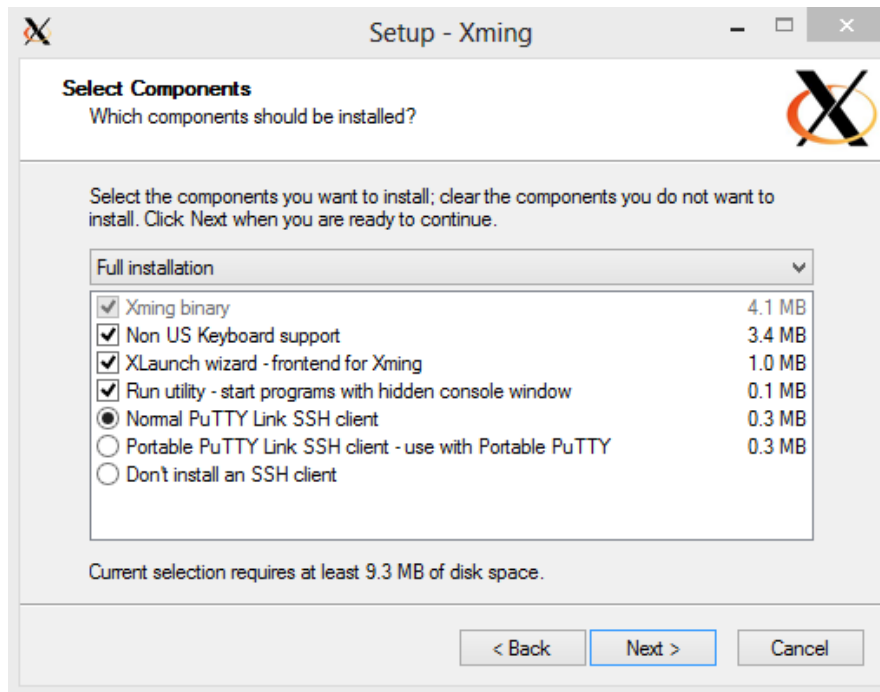
Once the Install program opens, click on Next



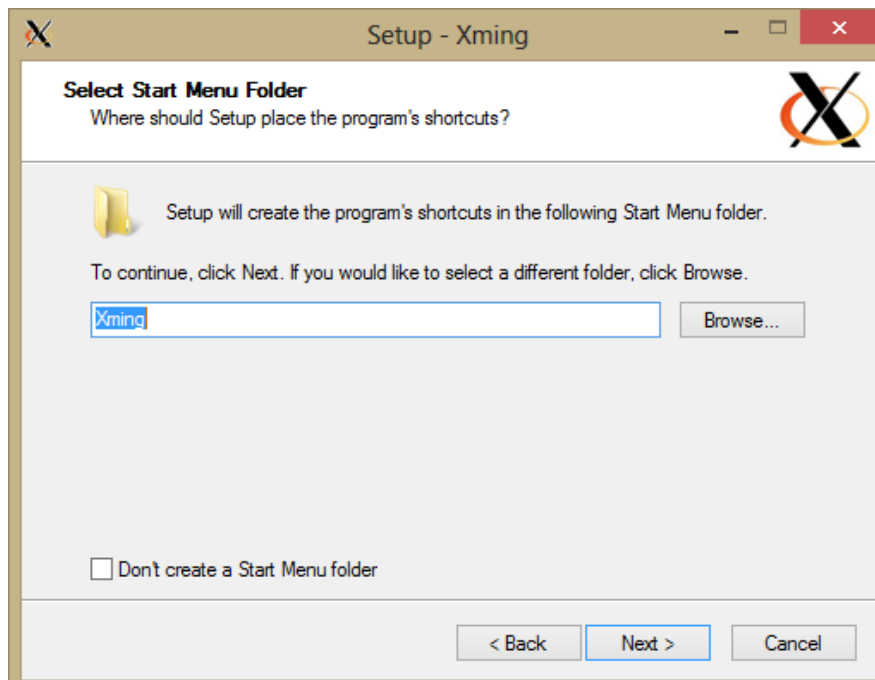
Again, click Next to continue



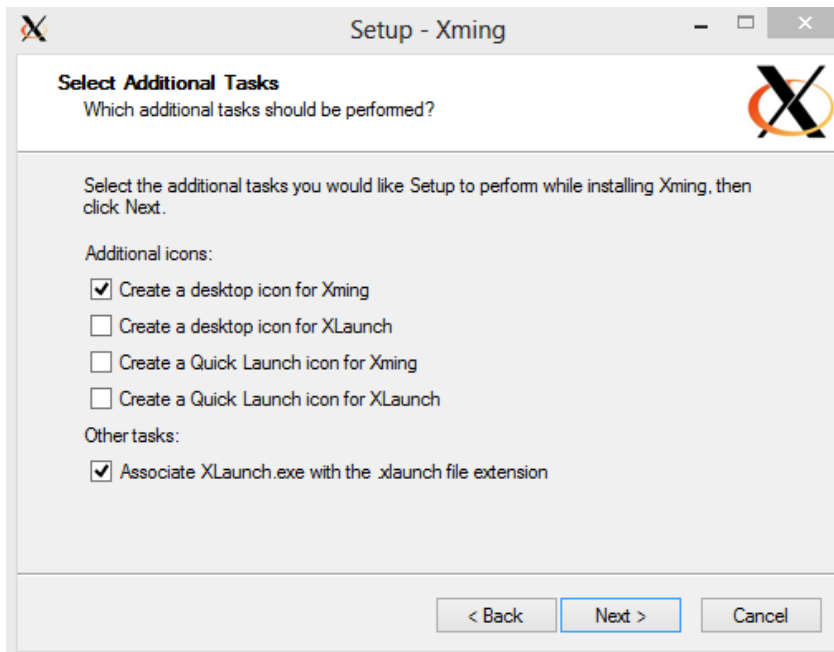
Make sure you have the same boxes checked and click Next



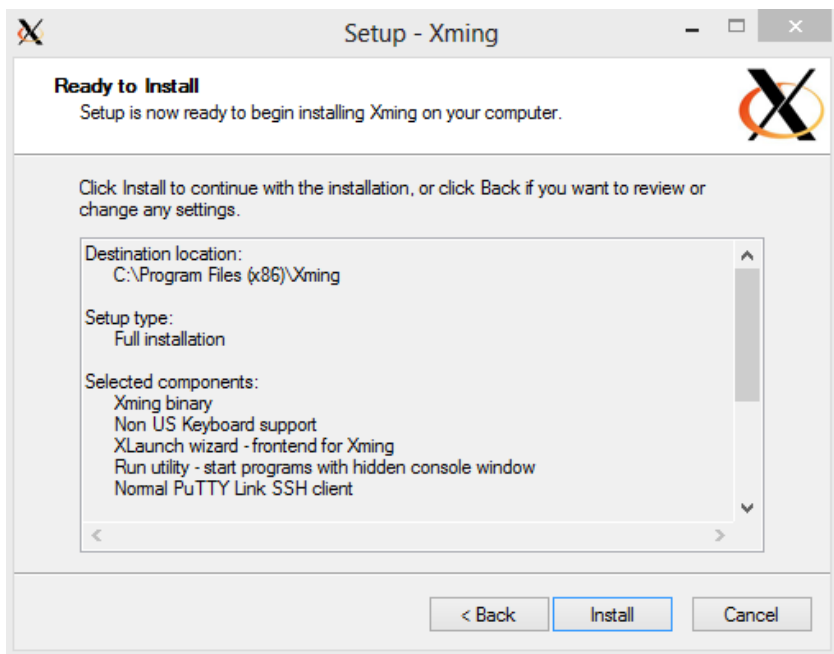
Click Next



Make sure your checks match and click Next



And finally click Install!



Once it installs, click on Finish



You will only notice in the bottom right hand tray that there is now an X



When you run Xming, it shows up in the bottom right hand tray. There are no settings that need to be changed. It just runs!

When you see the X in the system tray, launch Putty and connect to the Linux/UNIX server!

Remember, Xming will not start on its own. Make sure it is running BEFORE you launch Putty!

Setting up Putty

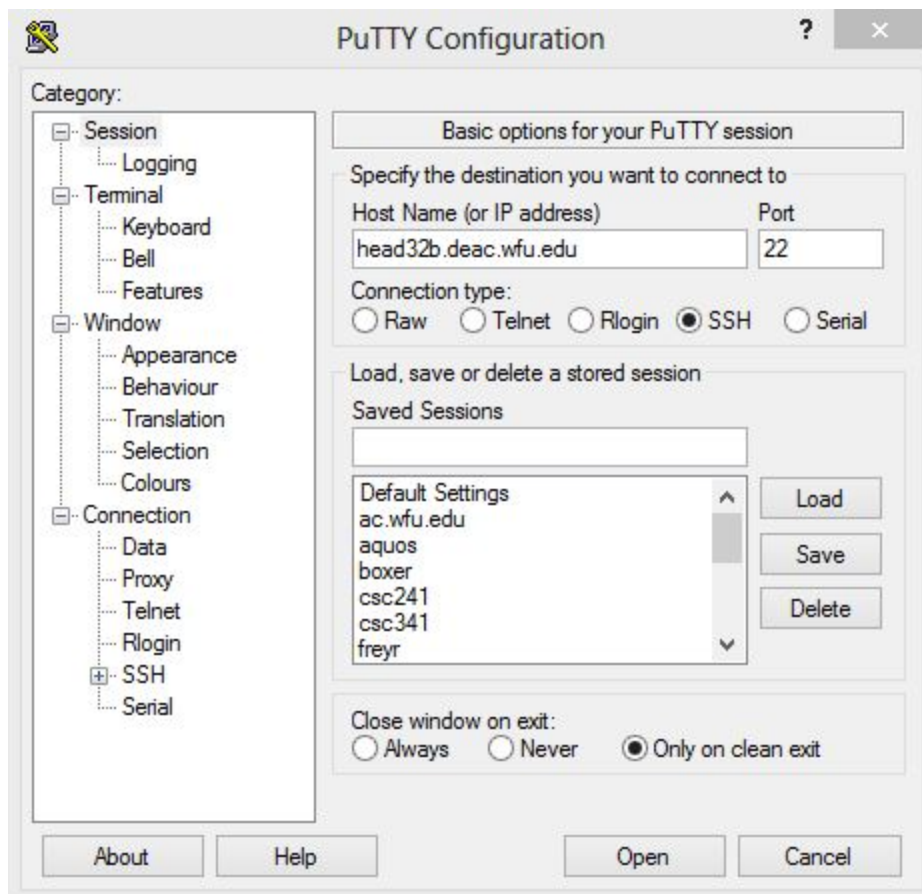
Putty comes as part of the WFU standard load and is preinstalled on your WFU laptop. If you need to install Putty, use the following link:

<http://www.chiark.greenend.org.uk/~sgtatham/putty/download.html>

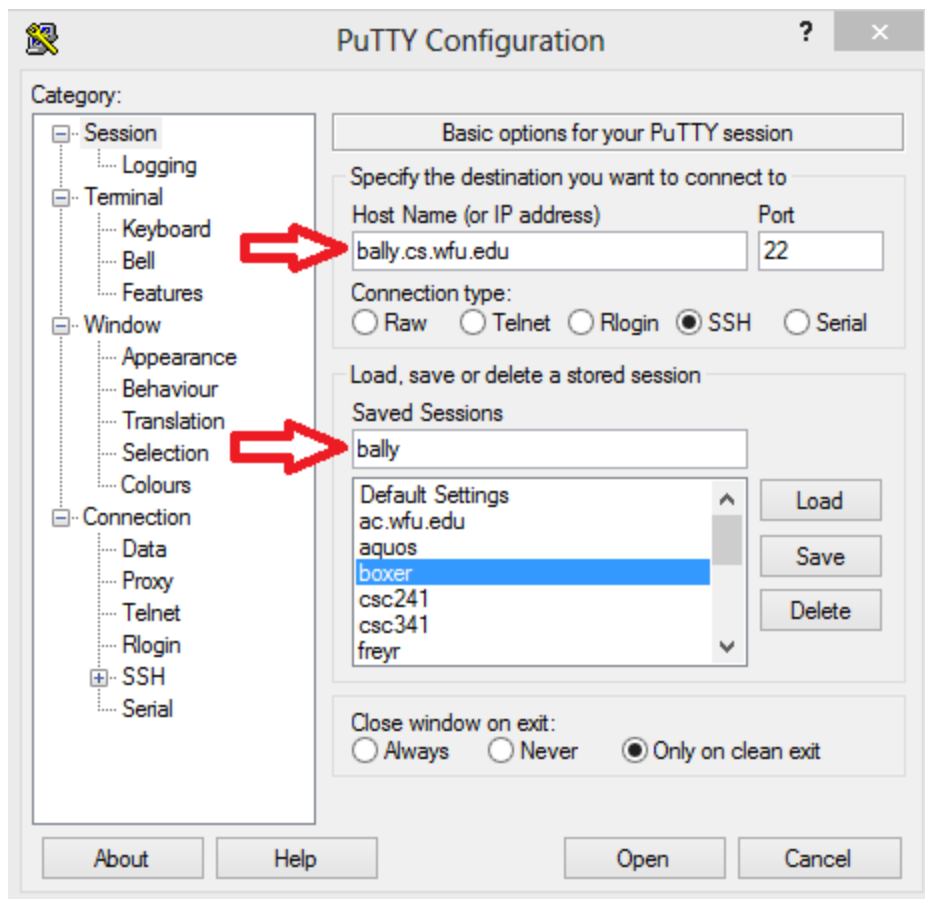
Accept all of the defaults if you need to reinstall.

Let's set up Putty to connect to a Linux/Unix server:

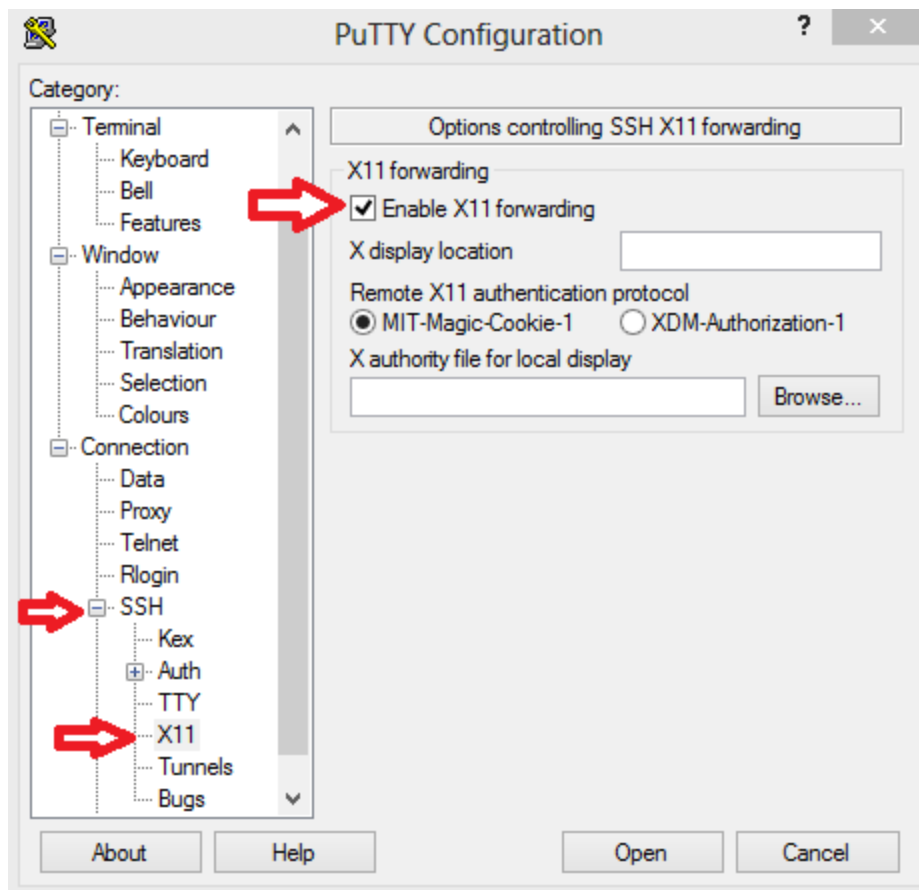
Open putty on your PC



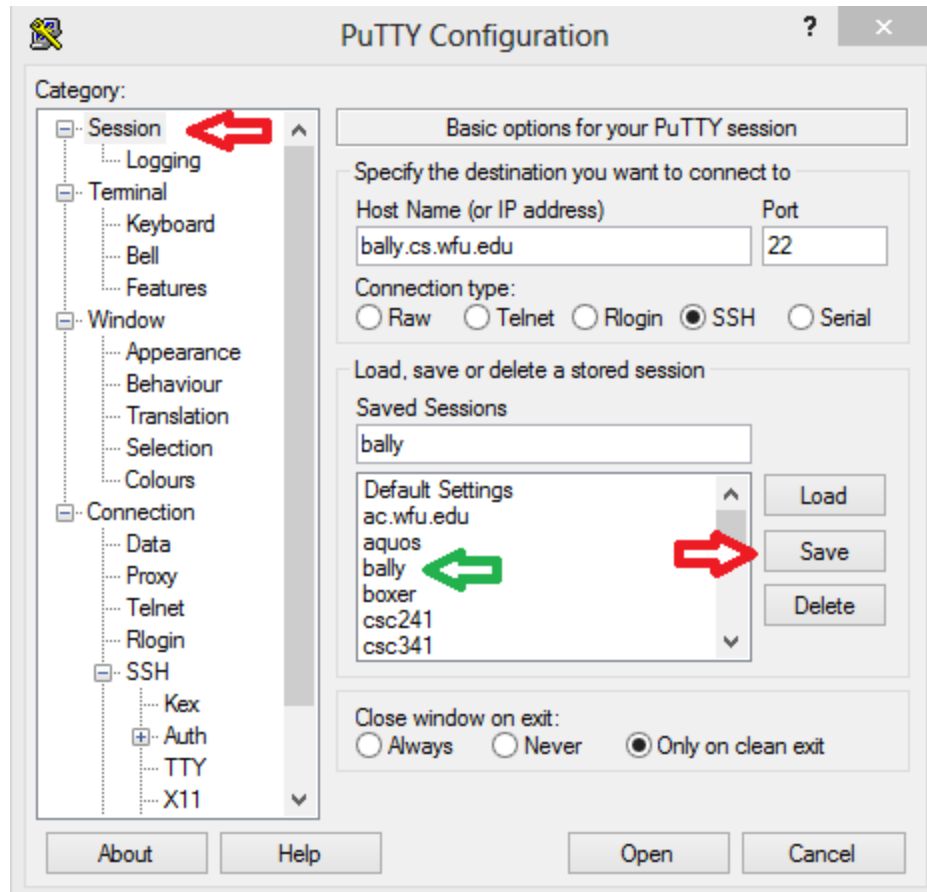
In the Host Name (or IP address) field type: bally.cs.wfu.edu
And in the Saved Sessions field type: bally



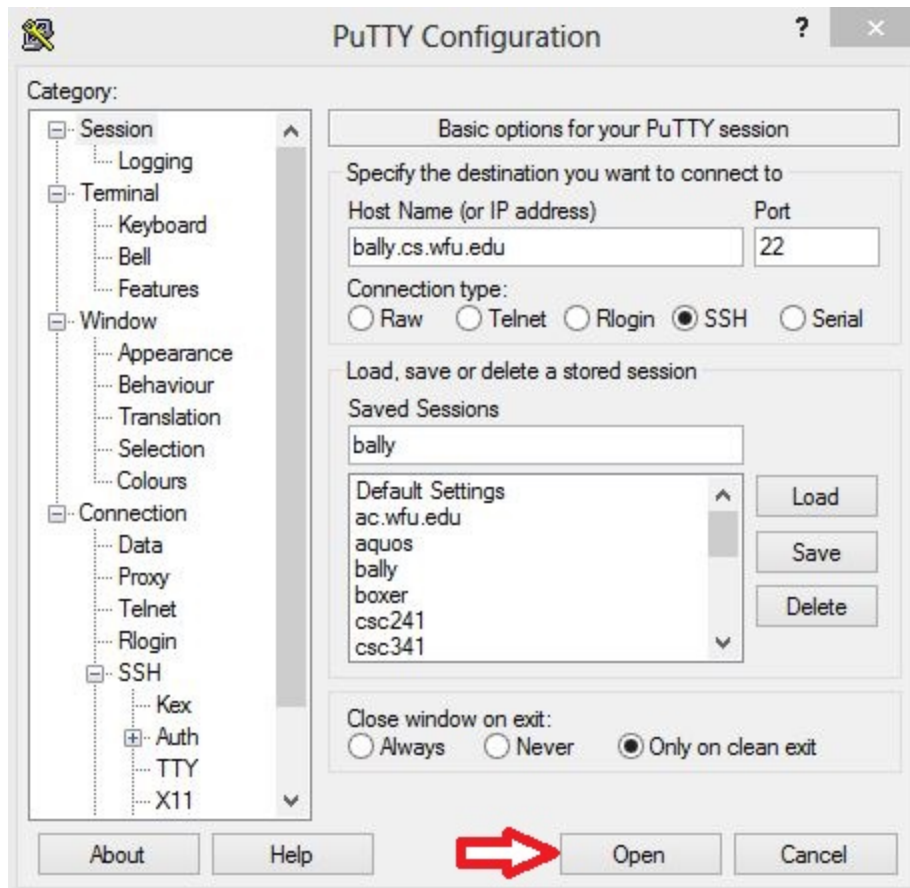
Scroll down and in the left pane, click on the + by SSH, click on the X11
In the right pane, click on Enable X11 Forwarding



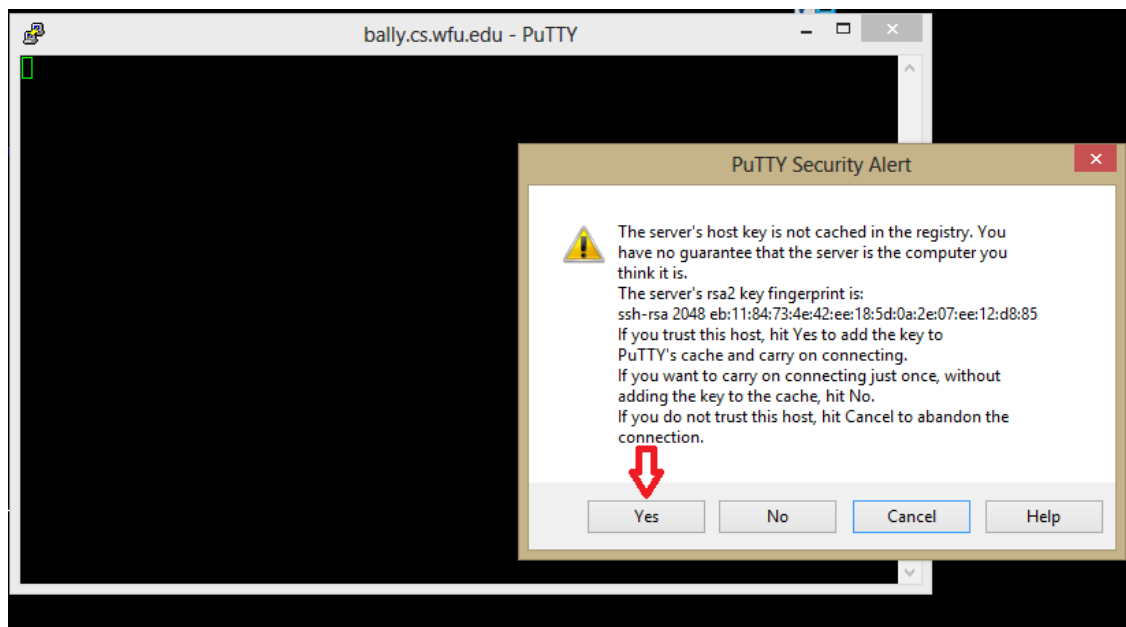
In the left pane, scroll up so that you see the word Session and click on it.
In the right pane, click on the word Save and bally will show up in the list of Saved Sessions



Click on the open button to connect to the server bally



You must answer Yes to accept the security keys



Login with your username and password

